

# SBS Automated Vehicle Location System

## Solution Overview

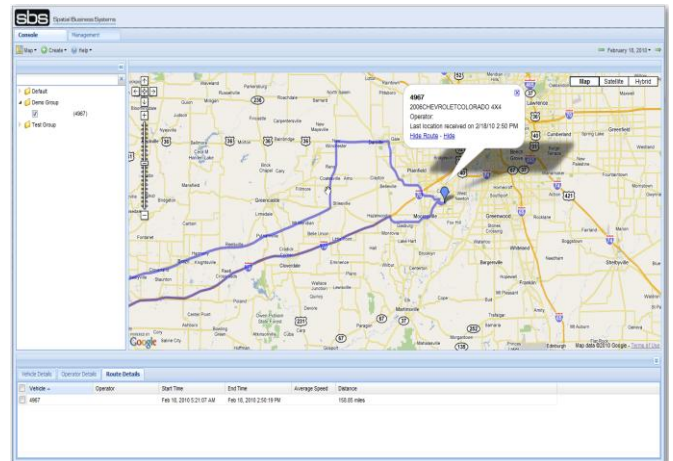
SBS Automated Vehicle Location (AVL) System is a powerful, next generation asset tracking solution developed by Spatial Business Systems. The framework is based on Google Maps and is complemented by the rich features of the Google Maps user interface. This standards-based solution reads data from a variety of GPS devices and external data sources to a standard relational database, allowing you to manage your assets with optimal efficiency at a much lower overall cost than traditional, proprietary AVL products.



### Key Features:

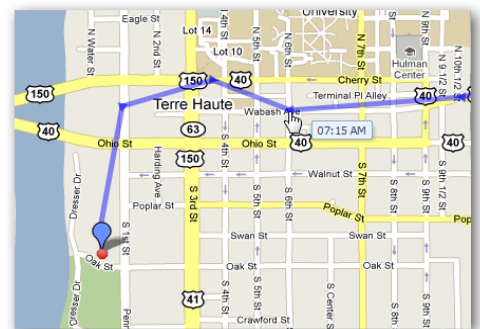
The SBS Enterprise AVL allows organizations to manage nearly any size of fleet or asset base with user friendly functionality. Key features of this solution include:

- Framework built on Google Maps
- Standard relational database framework to support business process integration
- An open, standards-based solution that can be installed within an organization's IT infrastructure
- Support for multiple GPS devices with additional device support available on a custom basis
- Point of Interest feature to support nearest asset location
- Ability to easily increase, decrease or segment the tracked assets to support fleet management
- Support for geofences and alerts to send notification applications based on location-based events
- A powerful, customizable management console to meet the specific needs of your organization
- A subset of the capabilities of Enterprise AVL are available in Standard and Lite editions to support a wide variety of organizations that have more limited asset tracking requirements



### Benefits:

- Improved productivity and utilization of mobile assets
- Scalable solution to manage small or large quantities of assets
- High availability and up to date data via the use of Google Maps
- An increase in customer satisfaction due to faster response times
- Intuitive functionality minimizes end user training requirements while providing increased data visibility
- Provides different levels of access to maintain security
- Options to host application inside corporate IT environment
  - Integration with 3<sup>rd</sup> party applications
  - Direct access to data for custom reporting
  - Eliminate monthly subscription fees commonly associated with AVL solutions (cellular carrier fees still apply)



### About Spatial Business Systems:

Spatial Business Systems, Inc. is a geospatial technology consulting firm based in Denver, Colorado, USA that specializes in highly integrated, enterprise GIS solutions. SBS is uniquely experienced at integration of GIS with traditional information systems and seamless coexistence solutions of different GIS products. Spatial Business Systems' personnel have performed hundreds of engagements in support of the utility, telecommunications and government markets.

**Spatial Business Systems, Inc.**

7175 W Jefferson Ave., Suite 4300 Lakewood, CO 80235

Phone: (303) 847-4200  
[Info@spatialbiz.com](mailto:Info@spatialbiz.com)

Fax: (303) 996-2673  
[www.spatialbiz.com](http://www.spatialbiz.com)