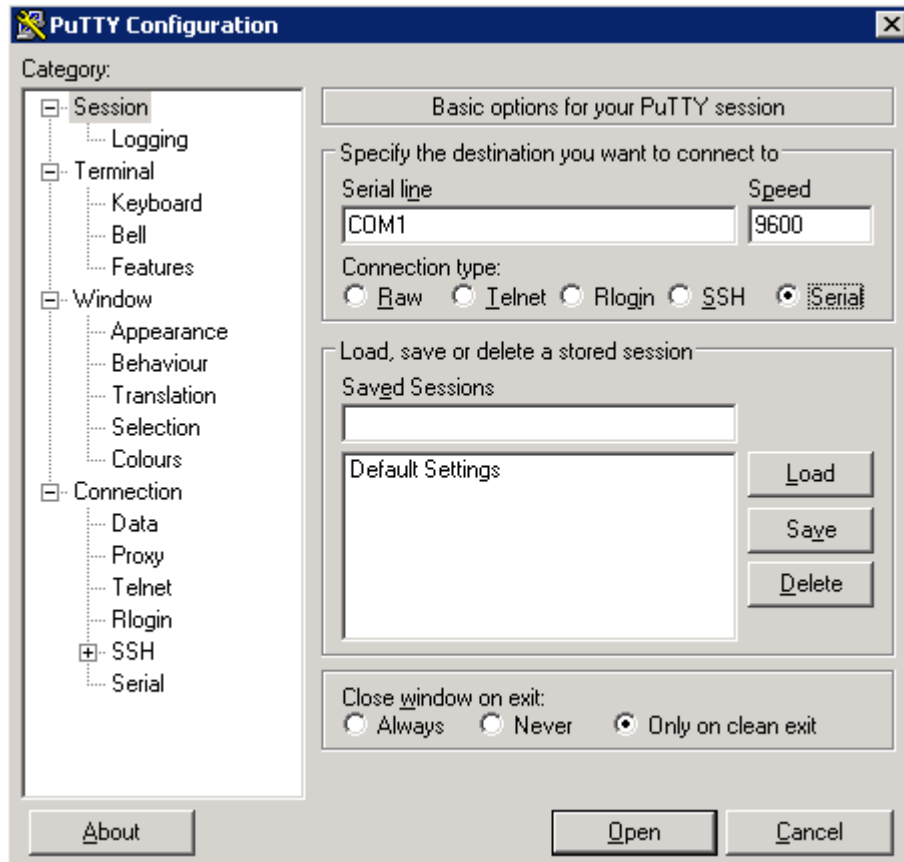


Could not connect properly to serial console with Windows 7 and Windows 2008 server

Problem: Many of us used HyperTerminal to connect to a serial device, such as a firewall or router. Neither Windows 7 nor Windows 2008 server offer HyperTerminal anymore.

Solution: An easy solution is to download [Putty](#) and put it in the %systemroot%\system32 directory. You can then call putty.exe from the “Run...” or CMD prompt.



Select the “Serial” option, enter the correct COM port and speed et voila...