

Smallworld Geotension*

fact sheet

Companies worldwide are under growing pressure to lower their cost of ownership for IT infrastructure, including geospatial deployment. To address this trend, GE Energy recently announced its strategy to develop standard, open, geospatial applications based on Oracle® Spatial for utilities and telecommunications companies.

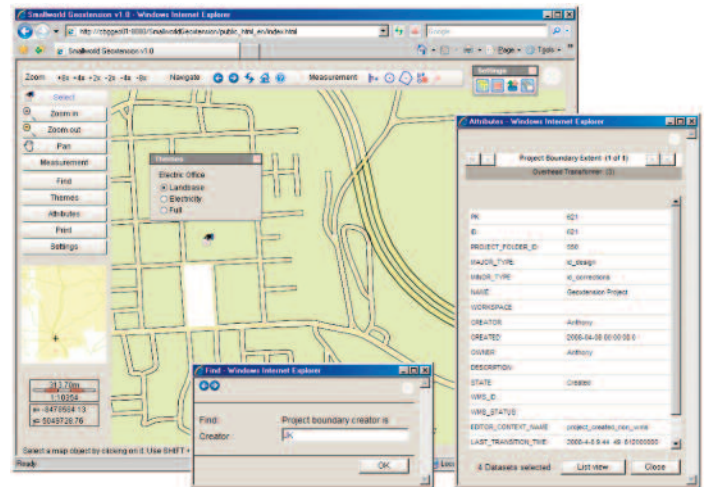
As part of this strategy GE Energy is providing Smallworld Geotension—a three-tier Web client integrated with GE's Oracle-based Electric Office environment, which can also be configured for any Oracle Spatial database.

Smallworld Geotension is the Web client platform for Smallworld Electric Office* powered by Oracle, a standards-based geospatial asset management solution for customers who hold network and asset data in Oracle Spatial, which will extend the reach of geospatial data throughout the enterprise.

Smallworld Geotension allows users to build and deploy web-enabled geospatial applications in a standard enterprise IT environment. Solutions can be deployed on any Oracle supported hardware platform and the client runs on a standard Internet Explorer.

From a user perspective, Smallworld Geotension provides non-expert users with easy-to-use environments to visualize and query spatial data without requiring any specific programming or database management background.

Smallworld Geotension



Functional Overview

Architecture

- Easy Web Client deployment with downloadable SVG plug-in
- Proven 3-tier architecture and implementation technology
- Allows sophisticated user access definitions
- Based on Oracle functionality and standards
- Data access and integration from multiple sources

User Interface and Usability

- Easy to use Query-View-Print functionality and User Interface
- Flexible User Interface configuration
- Support for user dependent GUI configuration
- Symbol handling to meet customers needs

Security

- Uses J2EE security mechanisms



Key Benefits

The key benefits of Smallworld Geotension include:

- Provides non-expert users with easy-to-use Web access to visualize and query spatial data
- Extends the geospatial enterprise with customizable client applications while keeping cost of ownership low
- Based on standard technologies and allows users to build and deploy web-enabled geospatial applications in a standard enterprise IT environment
- Solutions can be deployed on any Oracle supported hardware platform and on industry Application Server products like Oracle Application Server and JBOSS®
- Reduces risk as well as the effort and specialist skills required for publishing spatial data on the Internet

Smallworld Electric Office powered by Oracle is currently available as an Early Adopter release.

To learn more about Smallworld Geotension, contact your GE Energy sales representative or visit www.ge.com/energy.

Oracle is a registered trademark of Oracle Corporation and/or its affiliates.

JBOSS is a registered trademark of JBOSS, Inc.

* Trademarks of General Electric Company.

